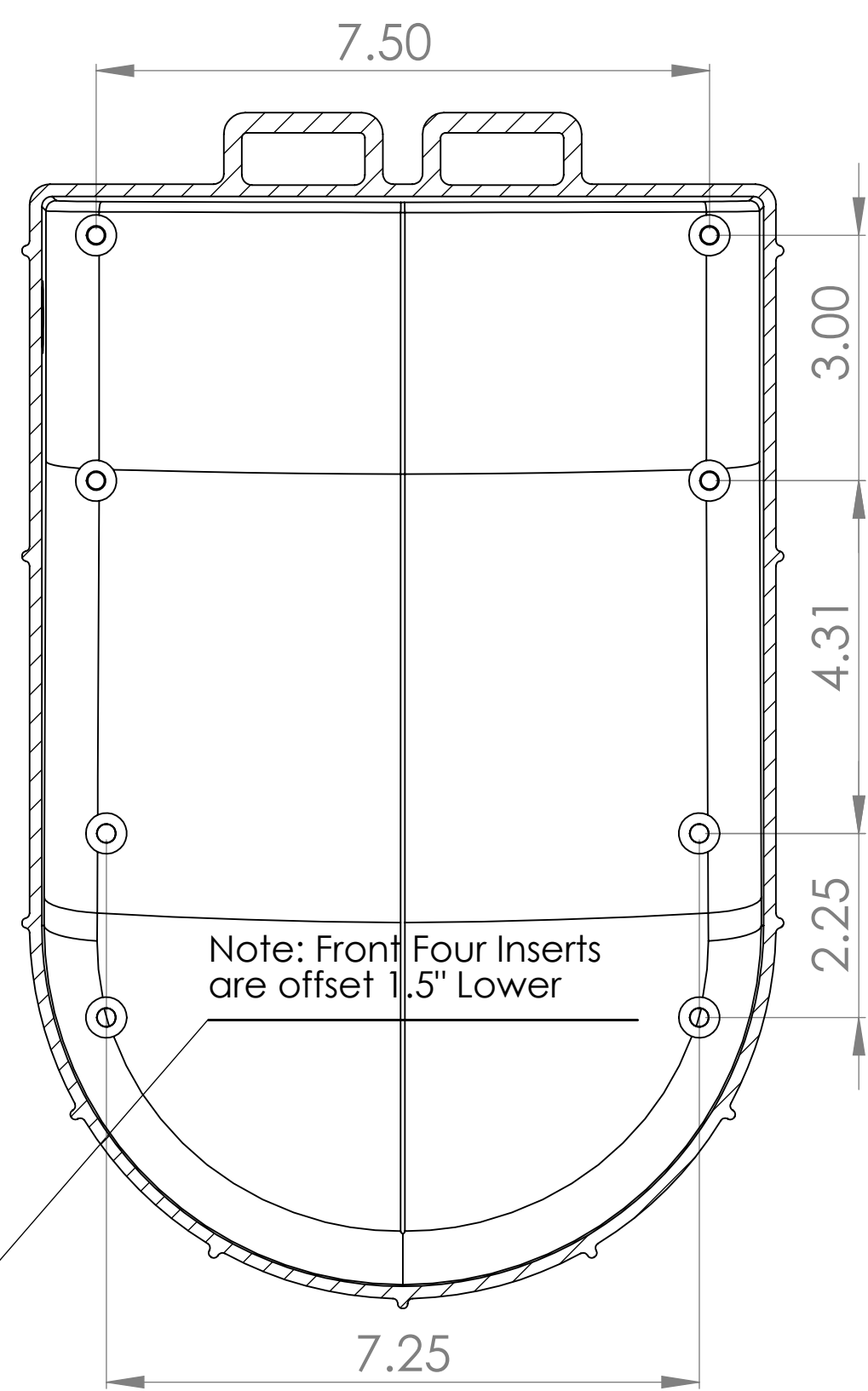
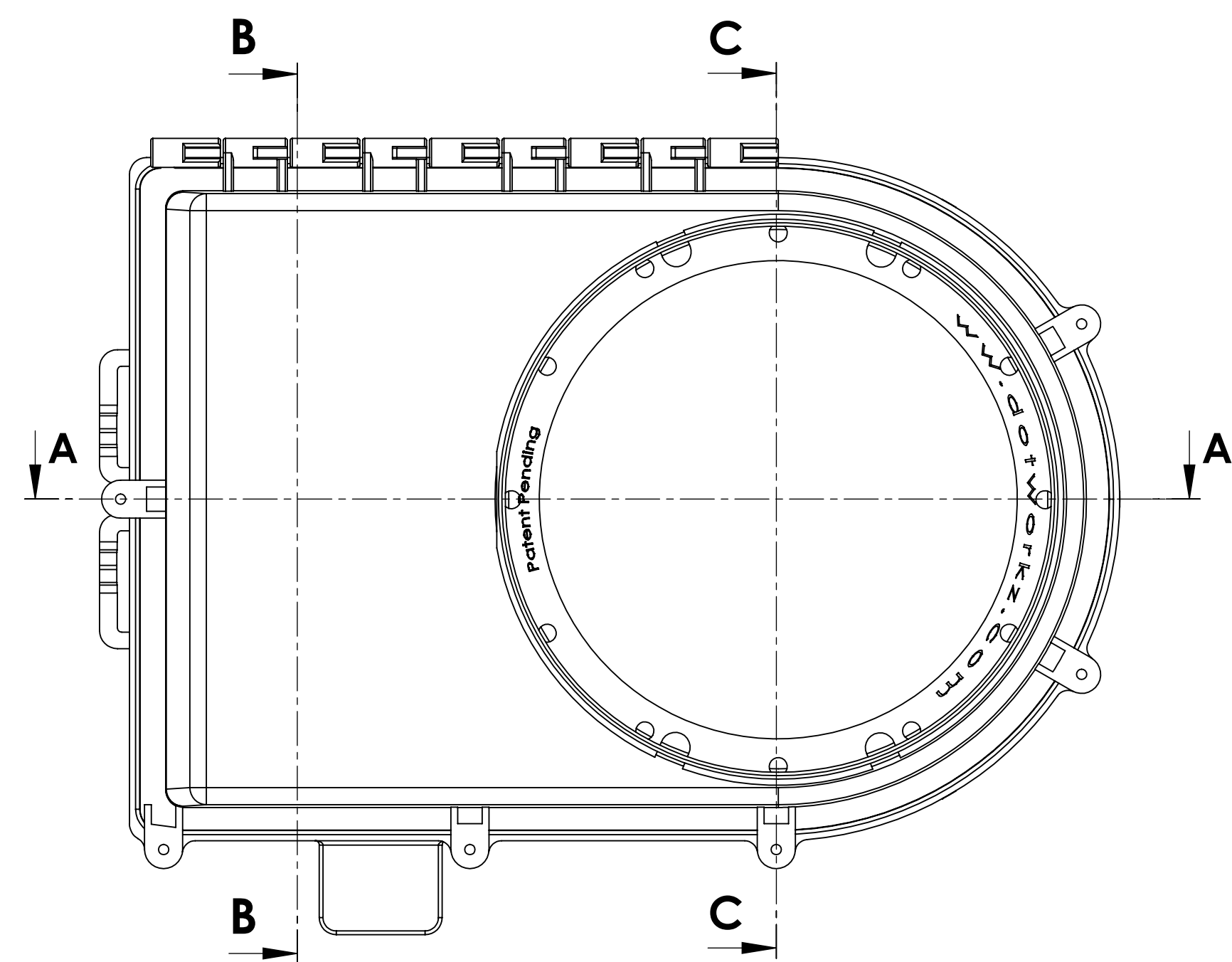
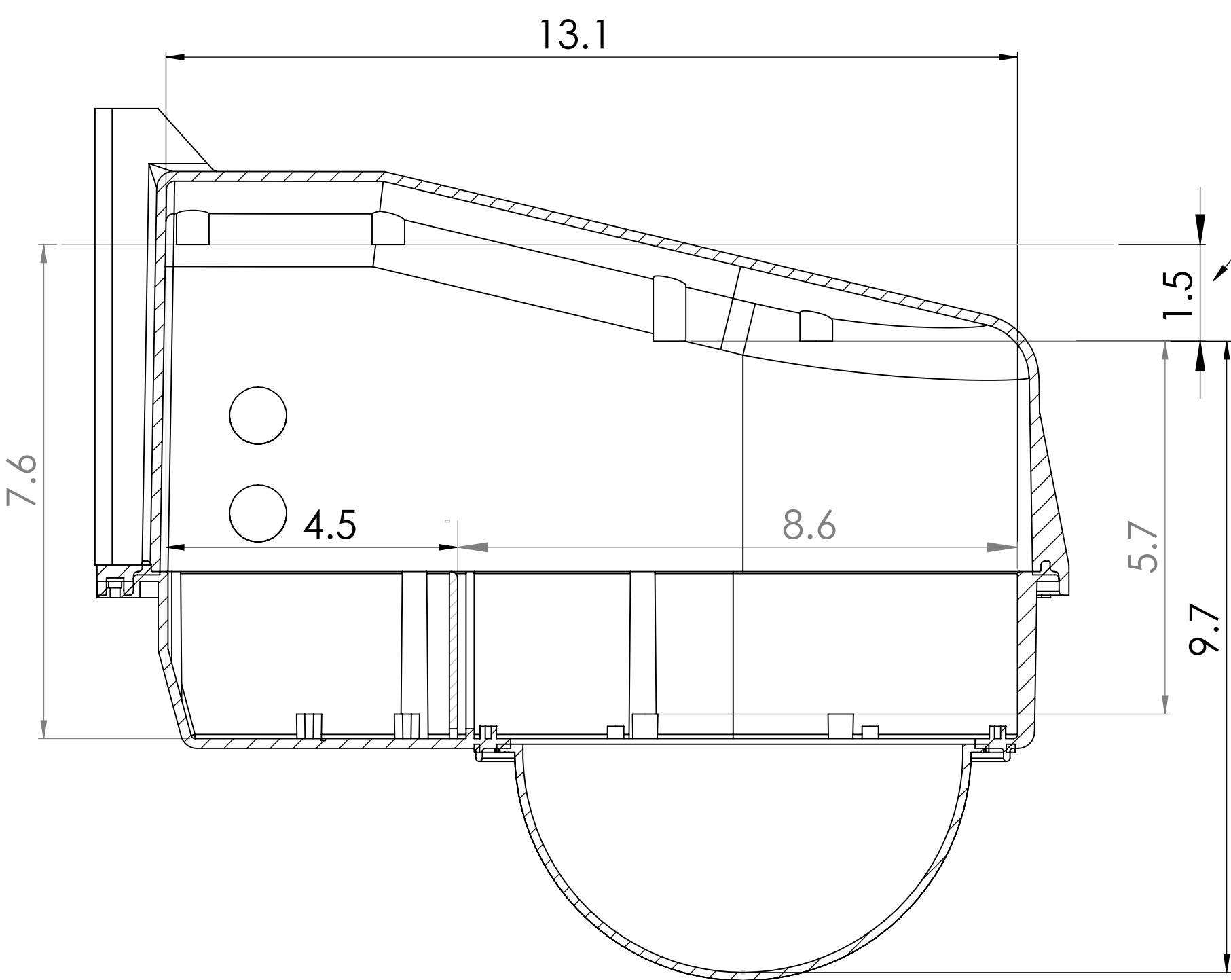
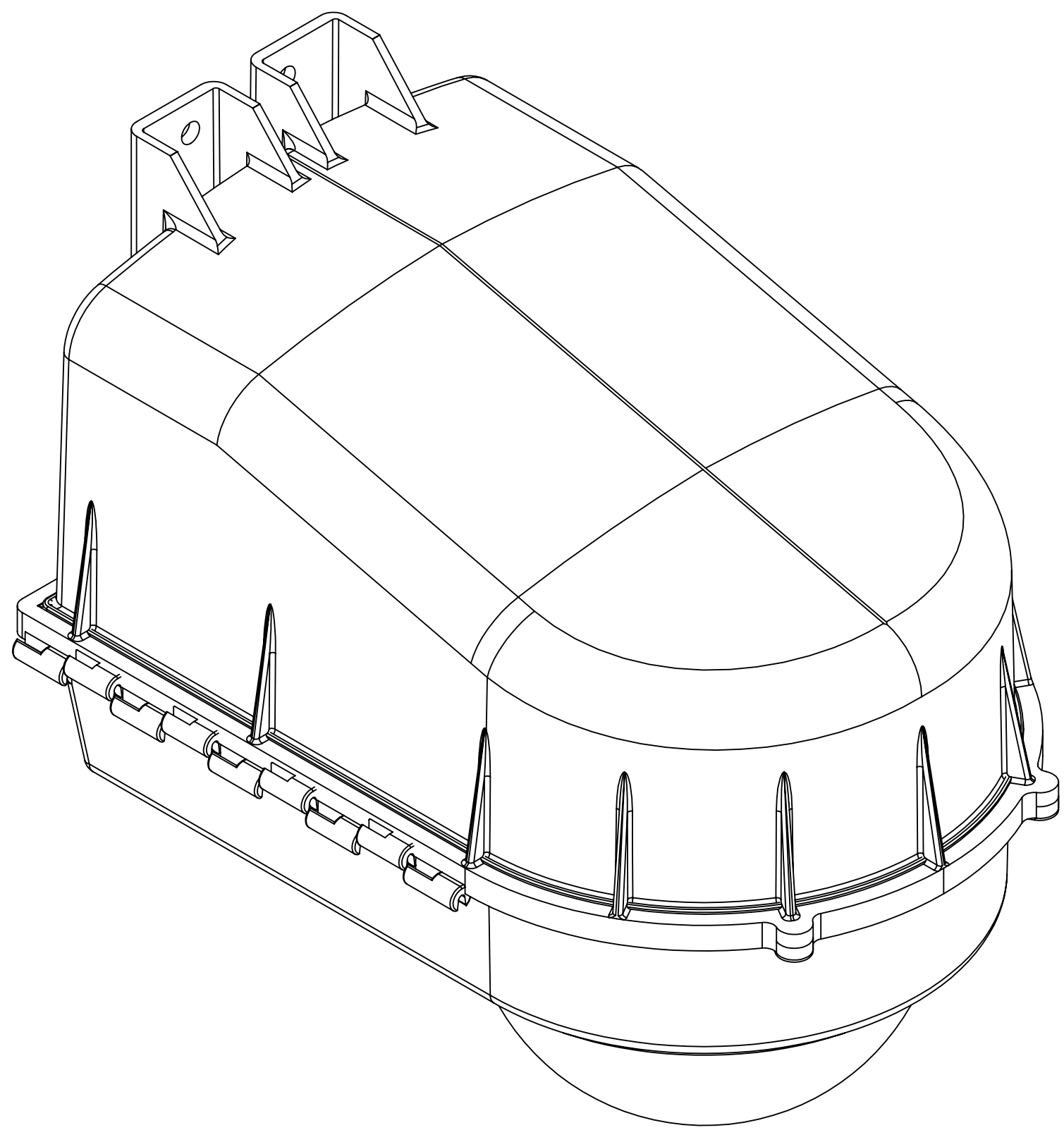


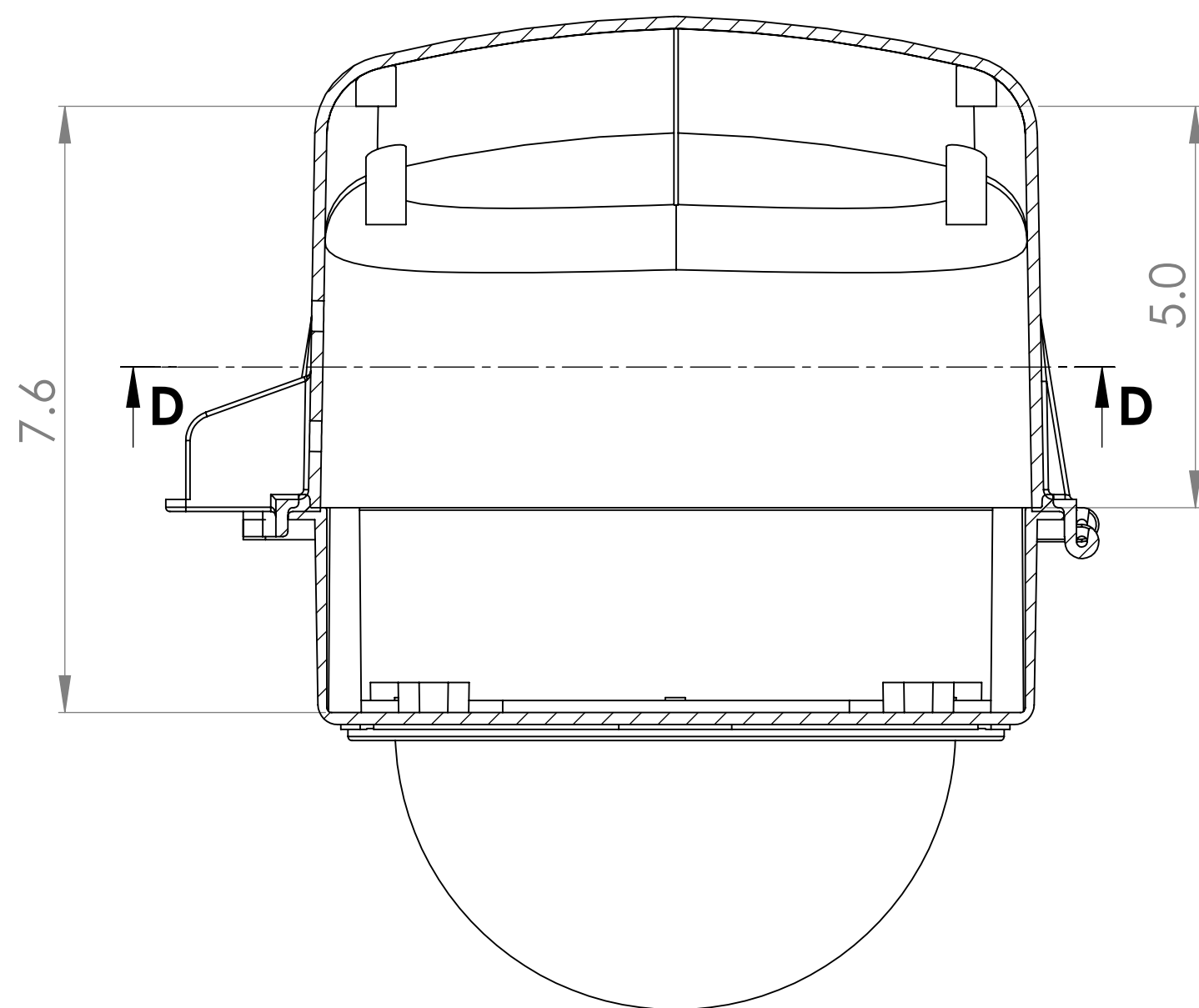
(8) Threaded Anchor Inserts in Upper: O.C.
for #8-32 MS Fasteners (0.375 max depth)
Forward 4 Anchors are 1.5" Offset Down below Rear-most 4 Anchors



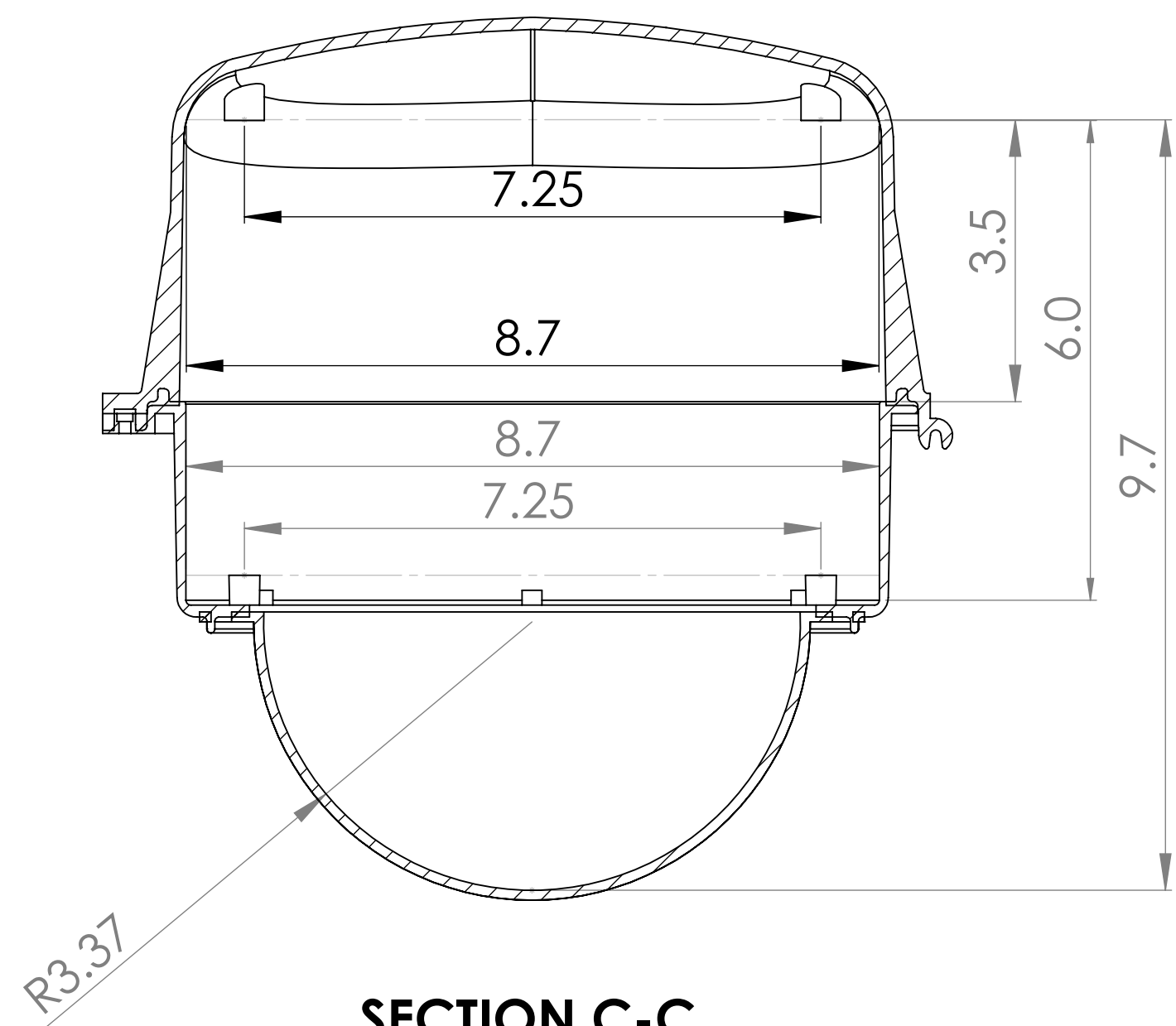
SECTION D-D



SECTION A-A



SECTION B-B



SECTION C-C

Camera Mounting / Forward Area
Detailed Dimensions for Anchors
& Clearances

NOTE: ALL DIMENSIONS
ARE INTERNAL / INCHES

UNLESS OTHERWISE SPECIFIED: DIMENSIONS ARE IN MILLIMETERS SURFACE FINISH: TOLERANCES: LINEAR: ANGULAR:				FINISH:		DEBUR AND BREAK SHARP EDGES		DO NOT SCALE DRAWING		REVISION	
DRAWN:				NAME		SIGNATURE		DATE		TITLE:	
CHK'D:										NOTE: ALL DIMENSIONS ARE INTERNAL / INCHES	
APP'VD:										DWG NO.	
MFG:										D2_Base Internal Dims	
Q.A:										A1	
										SCALE: 1:2	
										SHEET 1 OF 1	