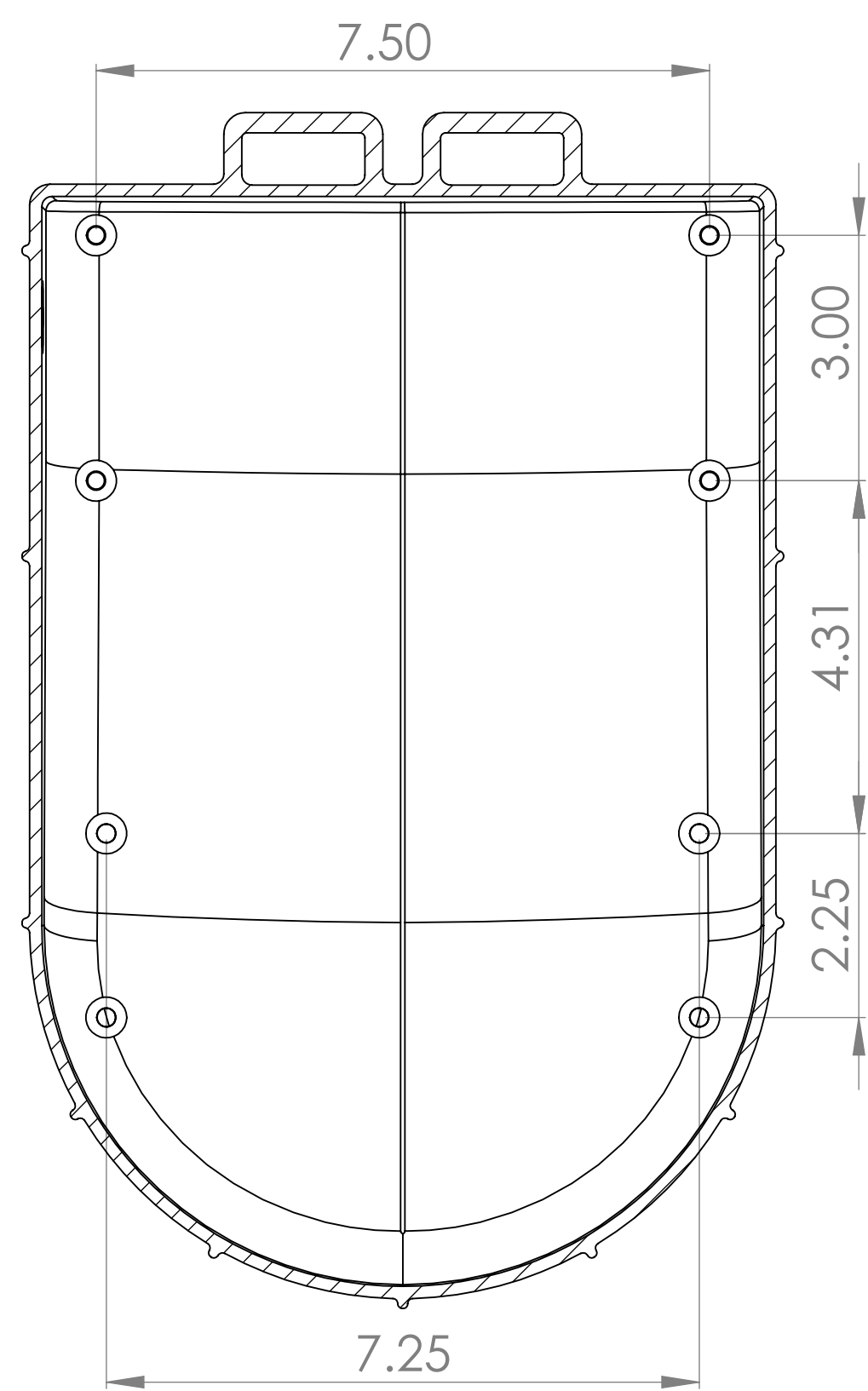
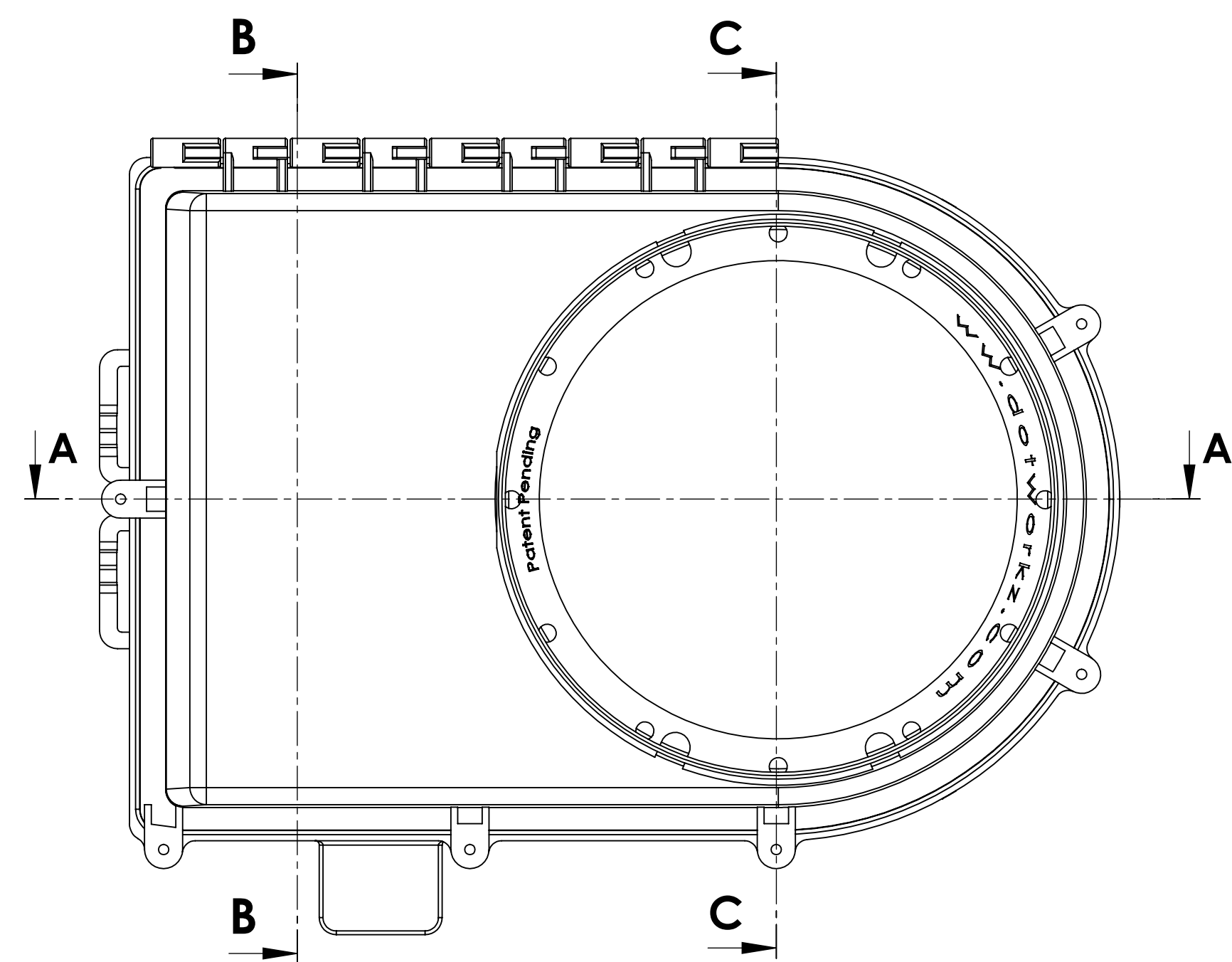
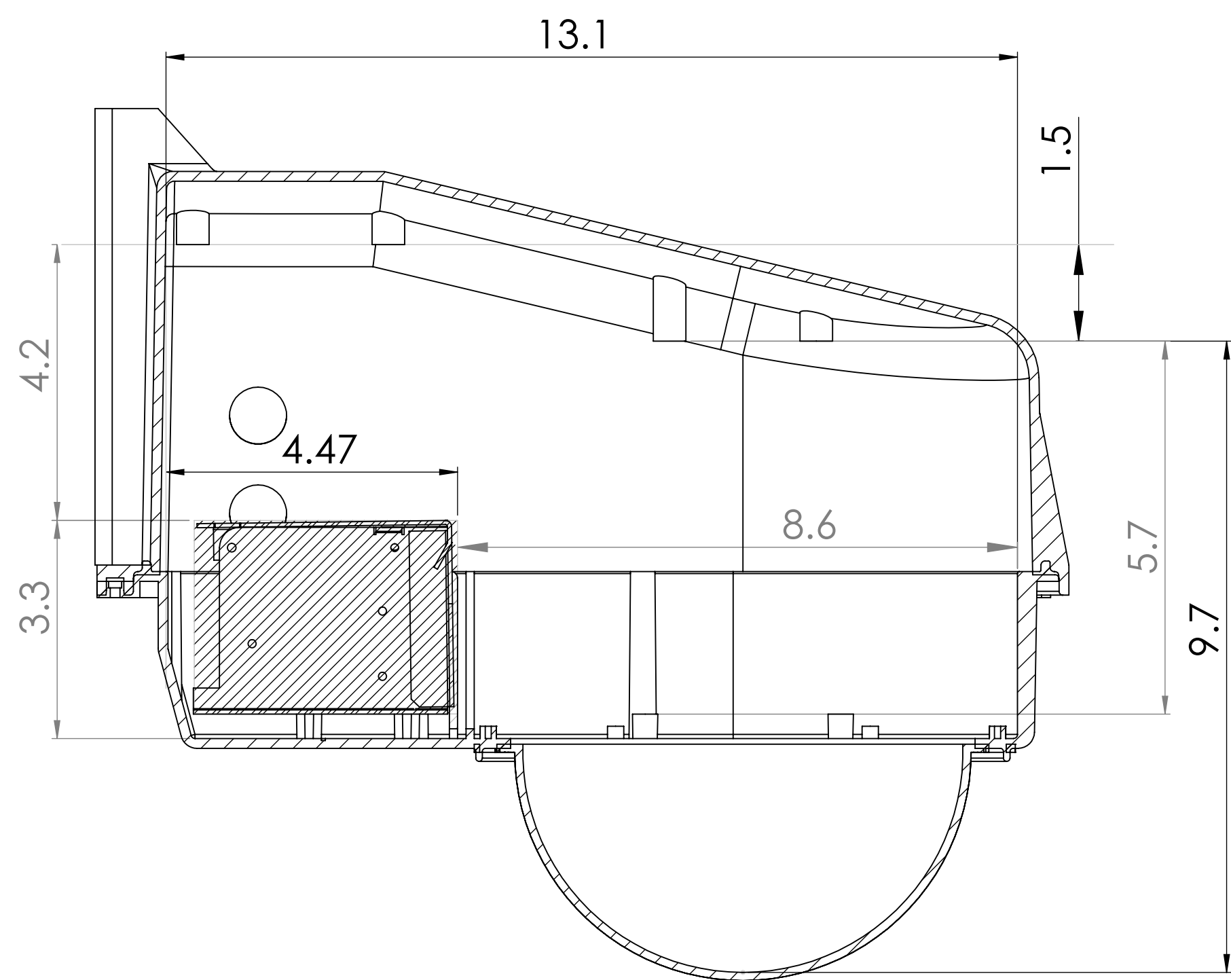
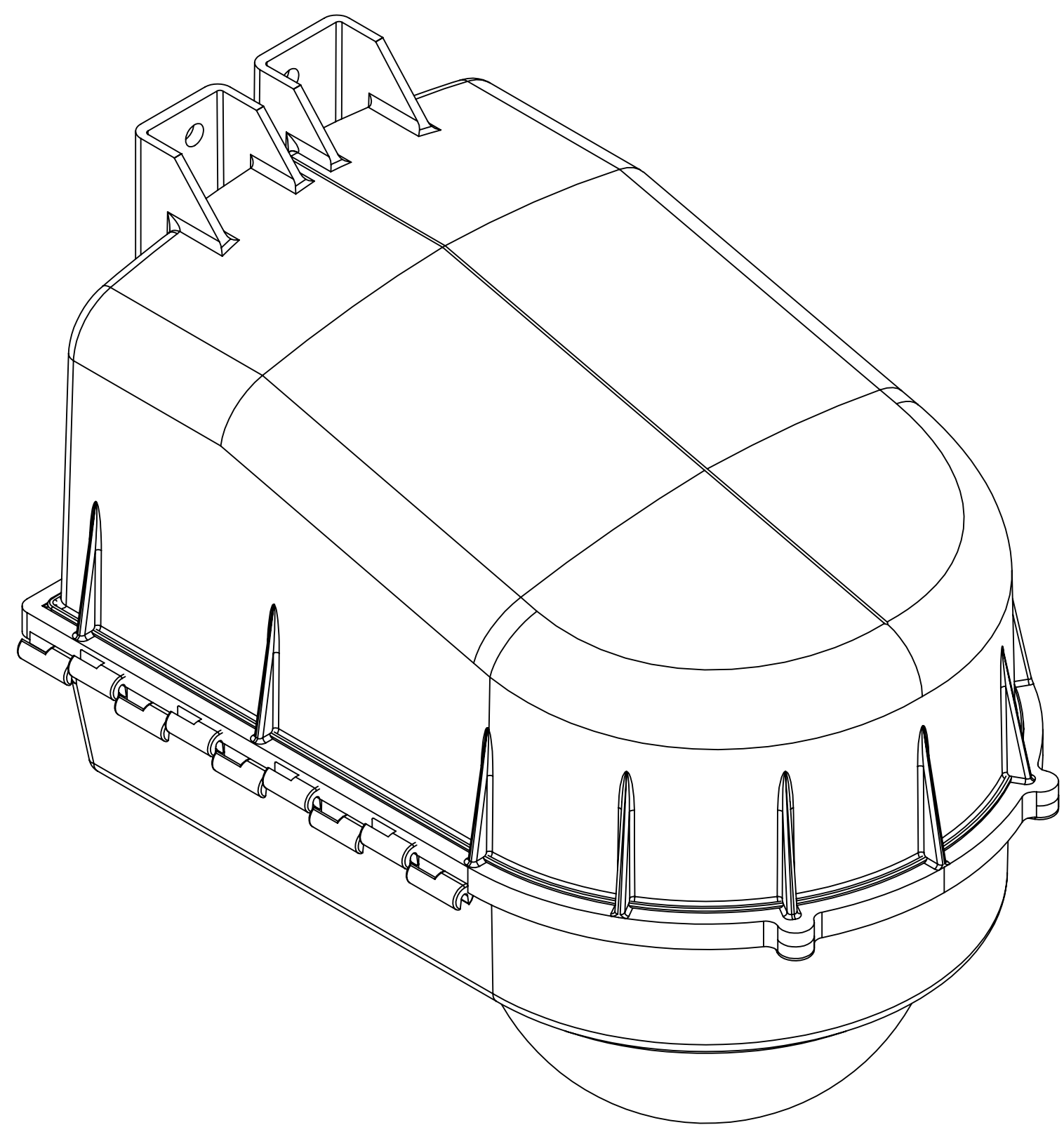


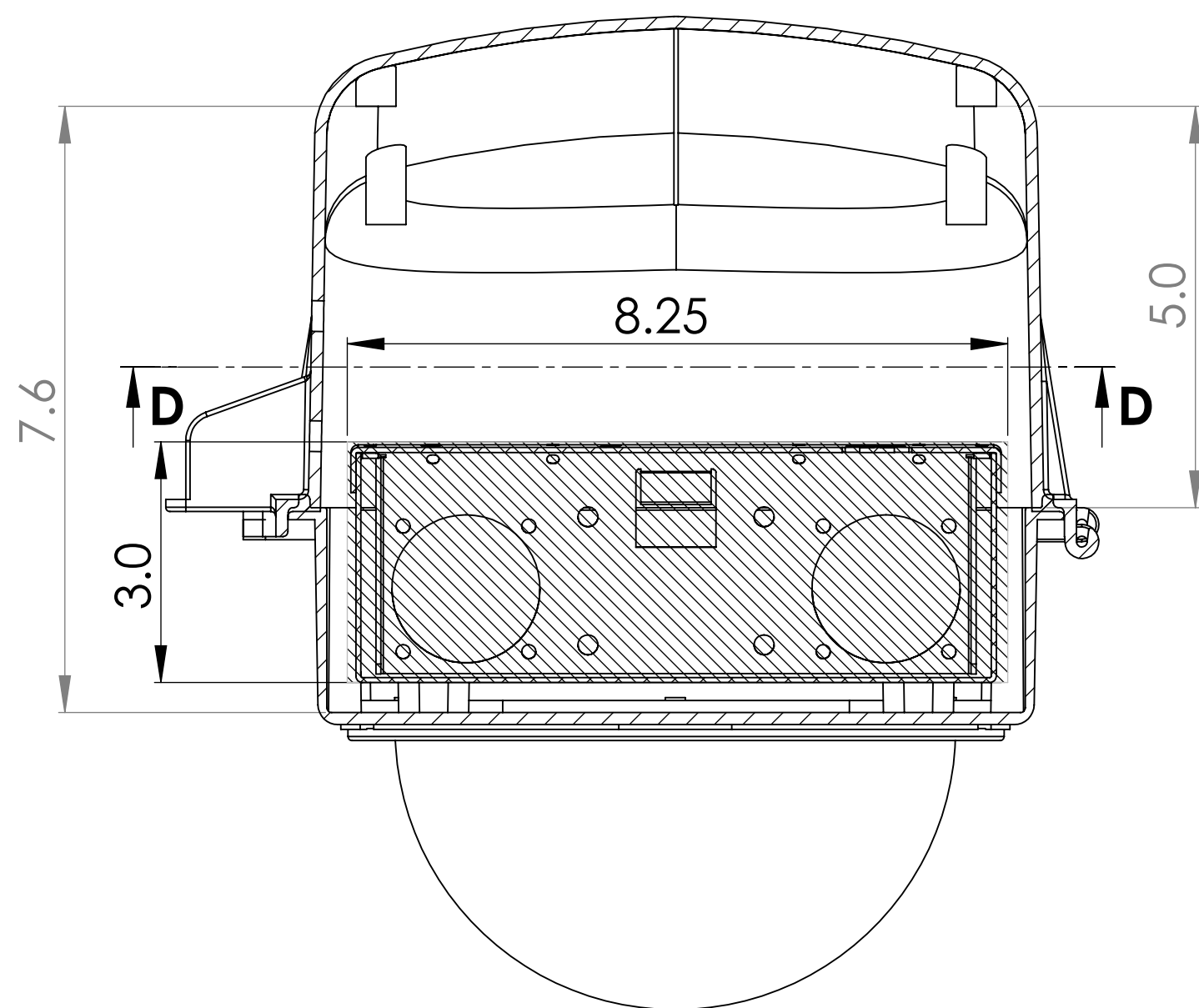
(8) Threaded Anchor Inserts in Upper: O.C.
for #8-32 MS Fasteners (0.375 max depth)
Forward 4 Anchors are 1.5" Offset Down below Rear-most 4 Anchors



SECTION D-D

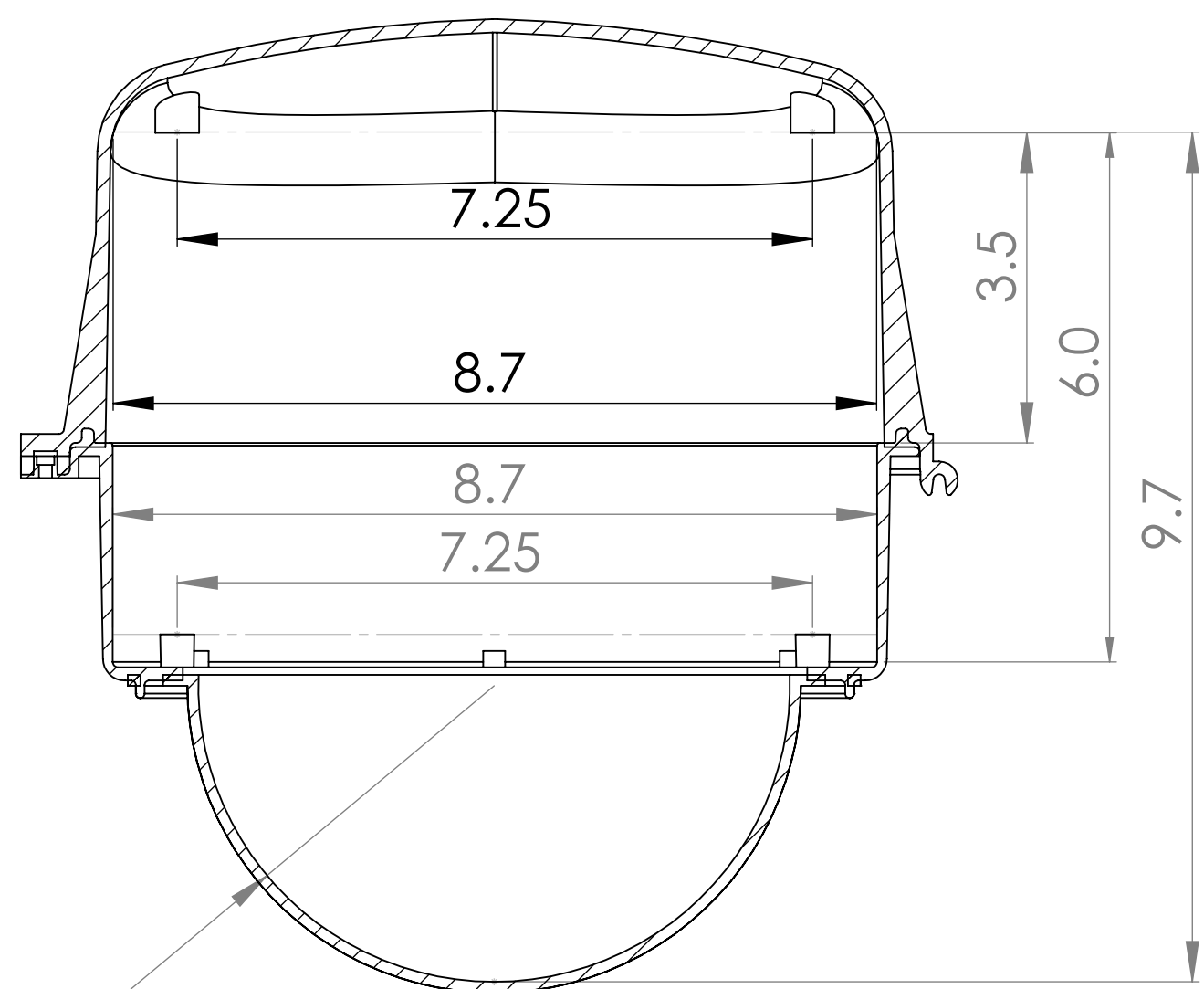


SECTION A-A



SECTION B-B

NOTE: ALL DIMENSIONS
ARE INTERNAL / INCHES



SECTION C-C

Camera Mounting / Forward Area
Detailed Dimensions for Anchors
& Clearances

Hash Area: MVP Chassis
Suggested to allow approx 1/2" Above & Front for Ventilation &
Cable Management
Dimensions Do Not include 1/8" Thick Insulation for TR Model
On RF model, Allow for front Heater Ring around Camera/ Lens Area

UNLESS OTHERWISE SPECIFIED: DIMENSIONS ARE IN MILLIMETERS SURFACE FINISH: TOLERANCES: LINEAR: ANGULAR:				FINISH:		DEBUR AND BREAK SHARP EDGES		DO NOT SCALE DRAWING		REVISION	
								NOTE: ALL DIMENSIONS ARE INTERNAL / INCHES			
DRAWN:		NAME		SIGNATURE		DATE		TITLE:			
CHK'D:											
APP'VD:											
MFG:											
Q.A.				MATERIAL:				DWG NO.		D2 MVP	
										A1	
				WEIGHT:				SCALE:1:2		SHEET 1 OF 1	