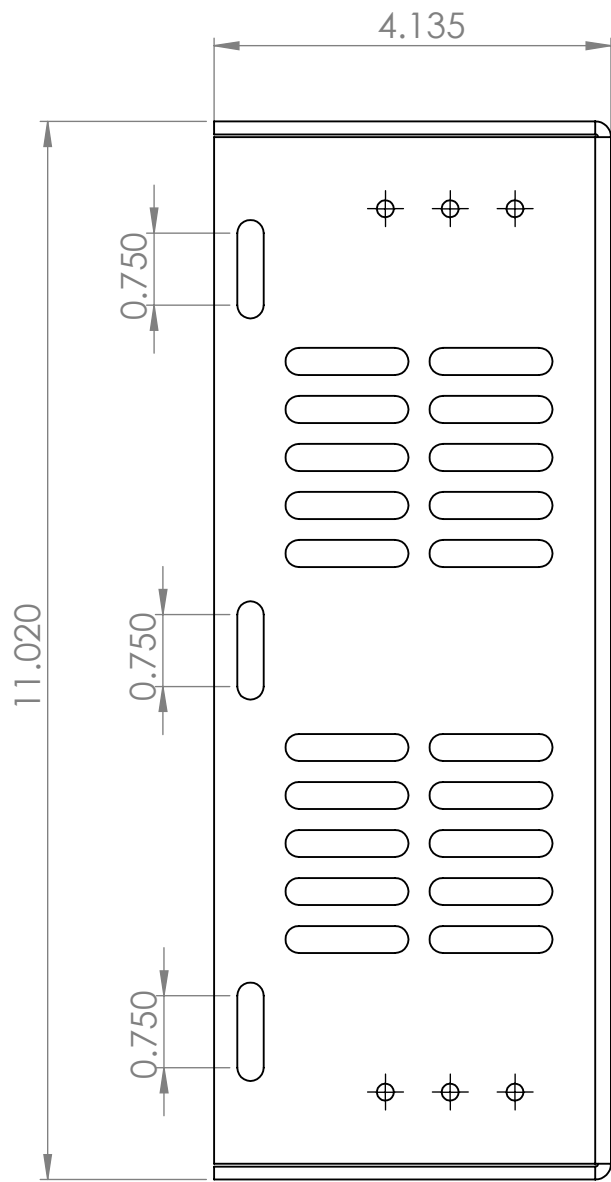
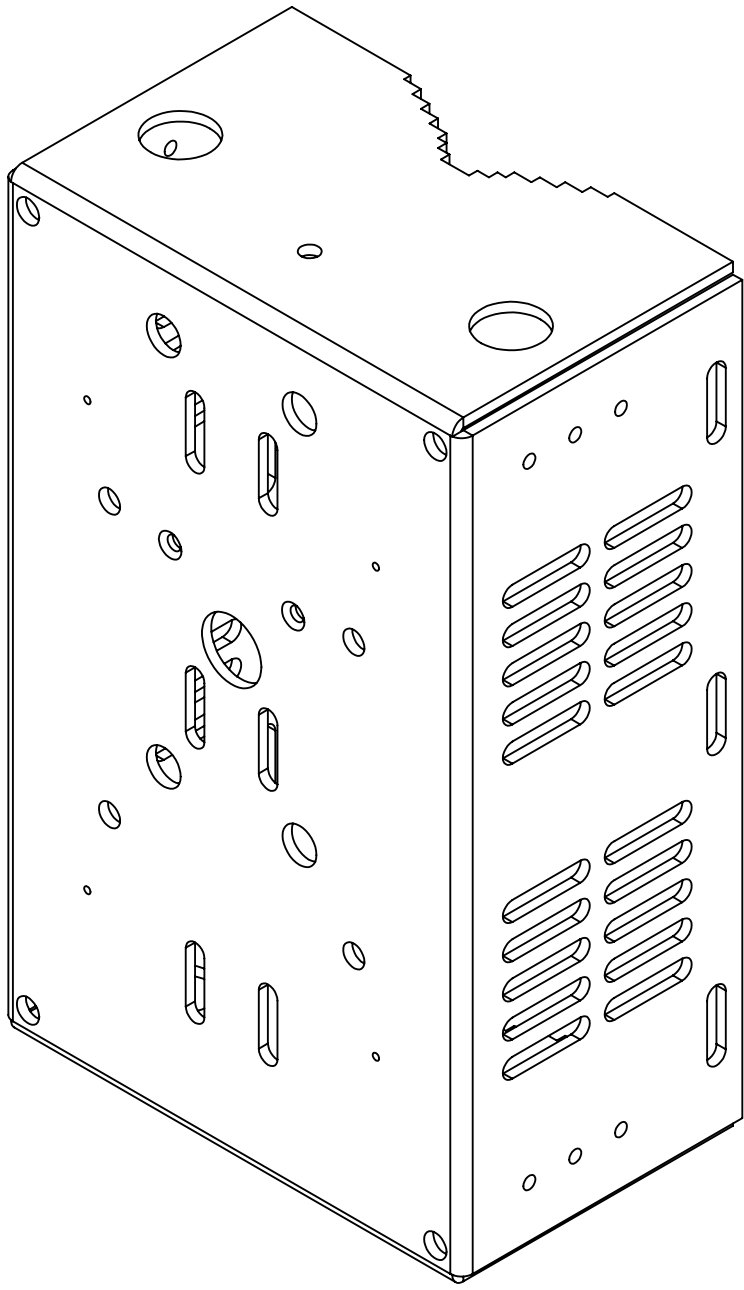
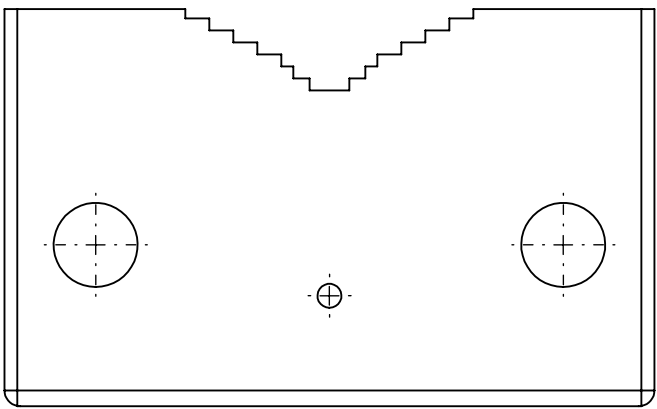
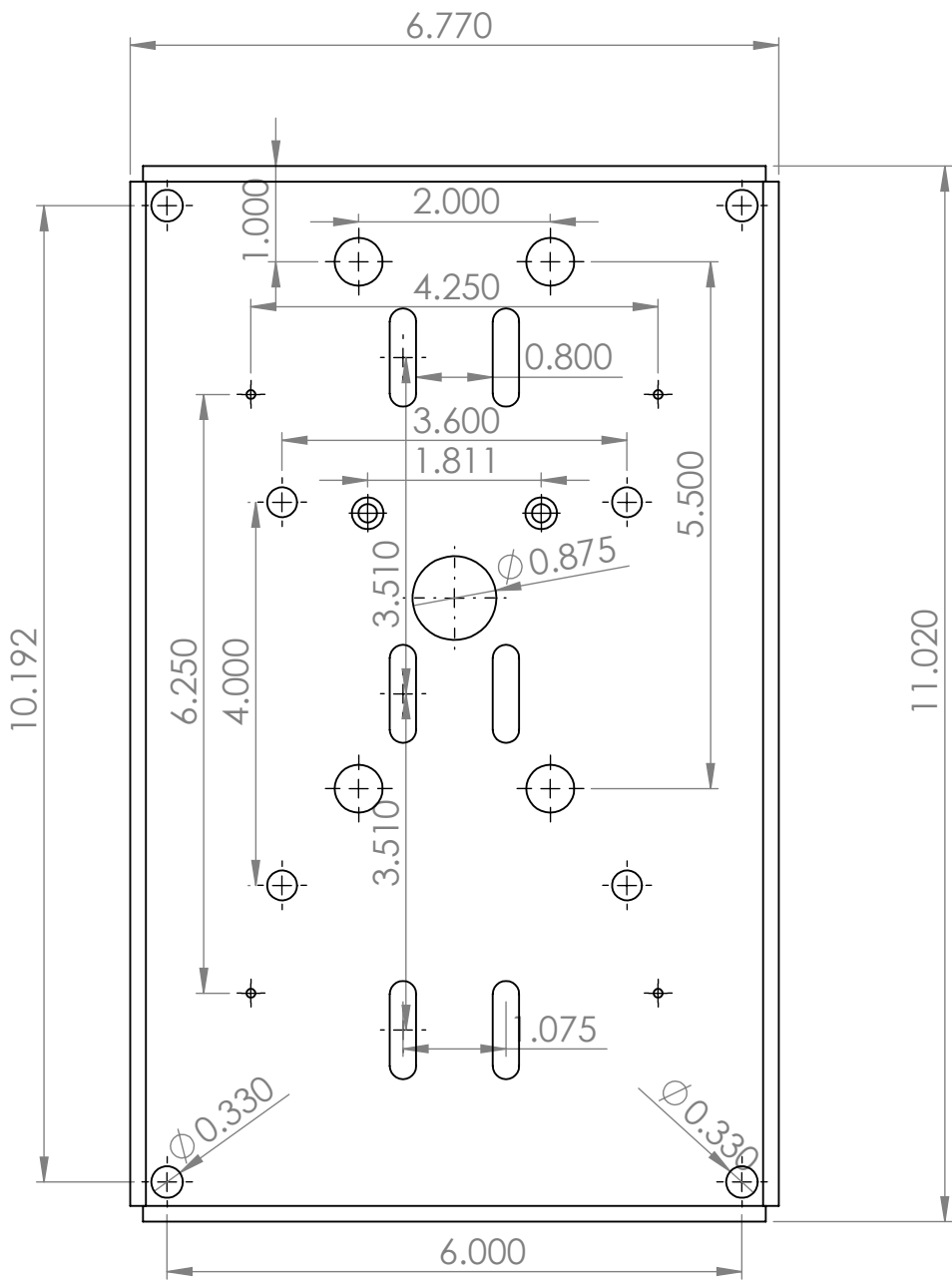
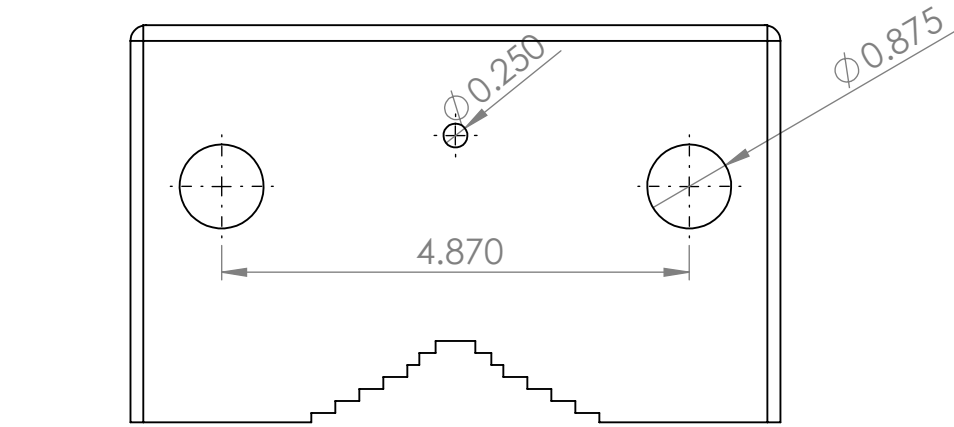
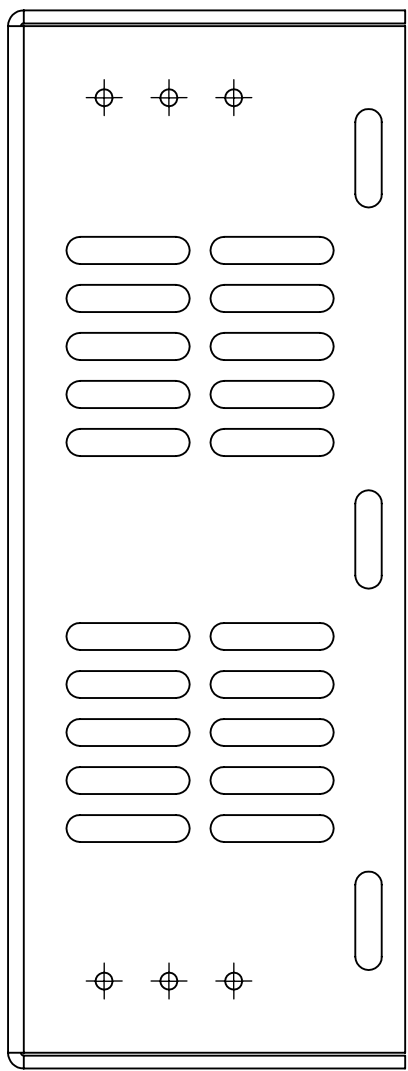


BR-MPM2 or KT-CDRx Series (v3.0)

Specifications
Material: Aluminum 10gg 0.130" nominal
Finish in White powder coat paint:

Threaded Nut Inserts:
(4)x 3/8"-16tpi
(4)x 5/16-18tpi



UNLESS OTHERWISE SPECIFIED: DIMENSIONS ARE IN MILLIMETERS SURFACE FINISH: TOLERANCES: LINEAR: ANGULAR:				FINISH:		DEBUR AND BREAK SHARP EDGES		DO NOT SCALE DRAWING		REVISION	
DRAWN:		NAME	SIGNATURE	DATE				TITLE:			
CHK'D:											
APP'VD:											
MFG:											
Q.A:					MATERIAL:		DWG NO.	A4 v.			
					WEIGHT:		SCALE:1:2	SHEET 1 OF 1			